

Type MB Mounting Bracket

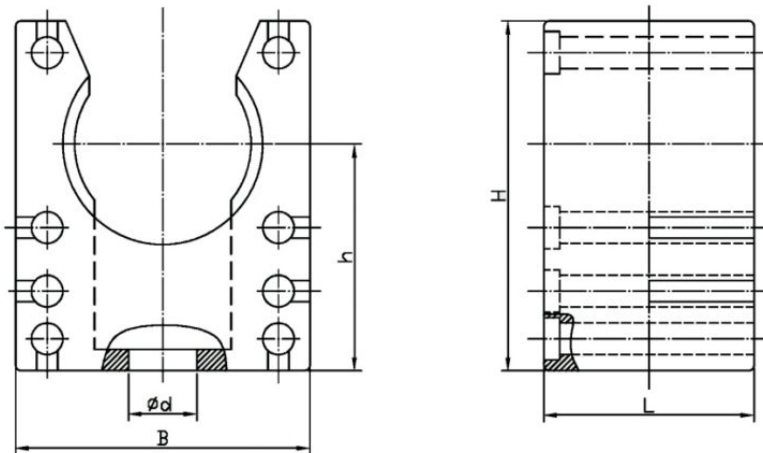
Part of the **Corrlok® / Reiku Nylon System.**

Type MB Mounting Bracket is intended to be used with Corrlok corrugated nylon Mechanical Protection Tubing (MPT) Types CL, CLR and CLFR.



Construction:

- Made from a specially compounded homogenous flame retardant nylon 6 material.



MB Profile

Product Table

U.S. TRADE SIZE	MM	NW	TYPE	REIKU	DIMENSIONS					Part #
					B (in)	H (in)	h (in)	L (in)	d (in)	
1/4"	10	7	MB-140	PAHDB-07	0.787	0.709	0.472	0.787	0.165	90350
5/16"	12	10	MB-516	PAHDB-10	0.787	0.906	0.610	0.787	0.217	90355
3/8"	16	12	MB-10	PAHDB-12	0.866	1.024	0.673	0.787	0.217	90360
1/2"	20	17	MB-11	PAHDB-17	1.102	1.299	0.843	0.787	0.256	90365
3/4"	25	23	MB-12	PAHDB-23	1.378	1.575	0.976	0.787	0.256	90370
1"	32	29	MB-13	PAHDB-29	1.693	1.772	1.055	0.787	0.256	90375
1-1/4"	40	36	MB-14	PAHDB-36	2.126	2.0867	1.213	0.787	0.256	90380
1-1/2"	50	48	MB-15	PAHDB-48	2.677	2.598	1.488	0.787	0.256	90385

Product Information

STANDARD COLORS

Black

WORKING TEMPERATURES

-40°C to 105°C Intermittent to 150°C

related products



Type CL

CL is a nonmetallic UL Recognized nylon corrugated Mechanical Protection Tubing (MPT) designed for the support and routing of conductors and cables. It is used as a UL / CSA component within OEM equipment.

[see product detail »](#)



Type CLR

CLR is a nonmetallic nylon corrugated Mechanical Protection Tubing (MPT) designed for the support and routing of conductors and cables.

[see product detail »](#)



Type CLFR

CLFR is a Low Fire Hazard nonmetallic nylon corrugated Mechanical Protection Tubing (MPT) designed for the support and routing of conductors and cables.

[see product detail »](#)



Type CF & CFF Straight Connectors

Type CF and CFF nonmetallic straight connectors are UL Recognized and intended to be used with Corrlok corrugated nylon Mechanical Protection Tubing (MPT) Types CL, CLR and CLFR. They are used as a UL / CSA component within OEM equipment.

[see product detail »](#)